

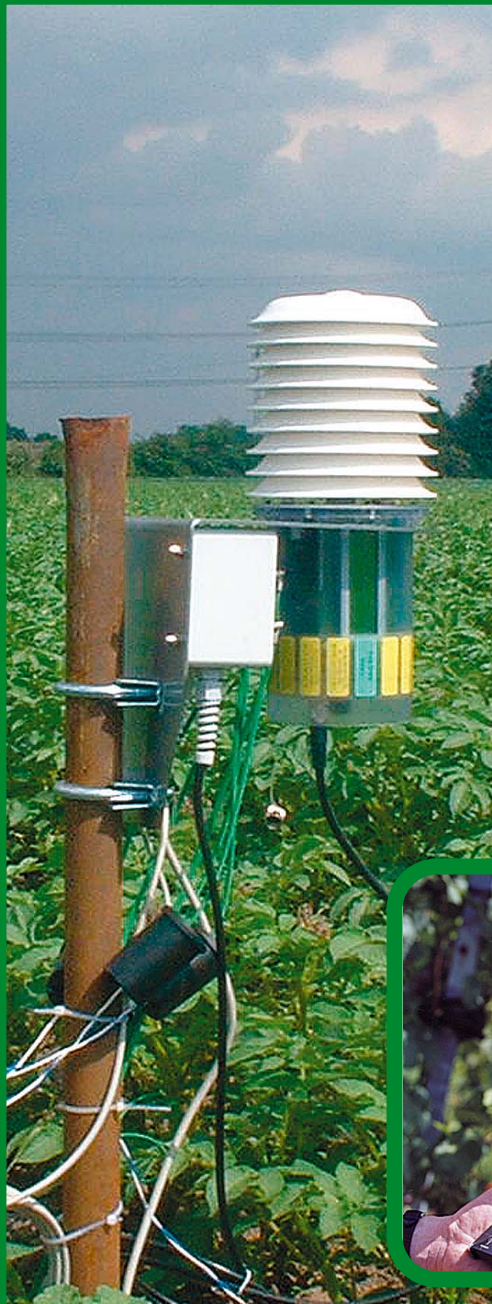
# μMETOS®

# ag

Visit our Webpage: [www.metos.at](http://www.metos.at)

## The portable Evapotranspiration and crop monitor right in your crop!

For all farming operations, information about weather condition in the field is most important in order to make intelligent and cost-effective decisions about disease-, pest-, fertigation- and irrigation-scheduling. If you practice precision farming, μMETOS®AG is the right instrument for you! It is mobile, easy to handle and provides you with all your needed information right away.



### Continuous weather data recording and immediate read-out of:

- Hourly and daily weather data
- Disease and pest warnings
- Crop specific evapotranspiration (Etcrop)
- Degree-day accumulation
- Chilling units.....

all at your finger tips!

Continuous in-field data on the potential for harmful pests and diseases as well as the calculation of Etcrop is provided automatically and in real time by this new system. μMETOS®AG makes you aware of what is really happening in your field and helps you to:

- Reduce the risk for disease and pest damage
- Save pesticide applications when not needed
- Improve yields and quality
- Evaluate the specific crop water use of your plant
- Reduce wear and tear on irrigation systems and reduce labor costs
- Prevent excessive leaching of plant nutrients
- Be aware of frost and/or other damaging situations in your field



Pessl Instruments is a worldwide manufacturer of electronic weather stations and warning systems since the 1980's. Ask for more information about the METOS electronic weather station line.

## Turning Information into Profits



µMETOS®AG is a small in field battery powered electronic weather station that uses the latest electronic chip technology. It is easy to install and can be used in all crops and climate zones. µMETOS®AG is a cost-effective and user-friendly instrument for continuously modeling disease and pest risk, and for calculating evapotranspiration (ET) on your farm using in-field measurements of temperature, relative humidity, wind speed, solar radiation, rainfall, leaf wetness and brightness.

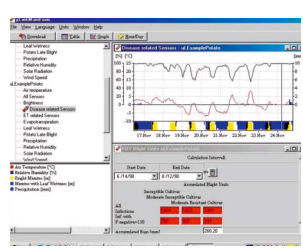


**Displays all information in the field** – The main logger of µMETOS®AG is completely sealed and protected against moisture. A two-line display shows the data from all sensors directly in the field. µMETOS®AG measures every five minutes and stores these values up to one year in the logger memory. Calculated data such as disease and pest risk based on degree-days, evapotranspiration are available.



**Transfers data to a PC**– The infra-red communication port used by the µMETOS®AG is a modern and cost-effective way to transfer data to a PC.

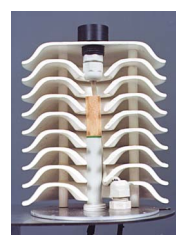
**Is Easy to Use** - The µMETOS®AG is operated by only one rotary switch and two push buttons. Data are readily available as a database file (Paradox) or as an ASCII file for Use in external models or for sharing with others.



**Includes µLink PC Software** – The µMETOS®AG comes with a comprehensive but user friendly Windows software that will help to analyze the data in almost any way . One copy of the software can manage as many weather stations as you wish by using the small, portable Pocket PC or Palm OS type PDA or regular Notebook computers. µLink is an open platform for developers that provide a number of export filters to other programs.

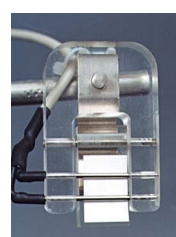


**Fully integrated solution** – µMETOS®AG is the only instrument that will provide you with real-time information about crop water use based on ET, disease/pest warnings based upon model results and current and past weather in the field.



**Accurate and proven sensors**

- **Temperature, relative humidity and global radiation** - Simple, but effective, design allows accurate measurements in all world climate zones (Temperature range: -30 to 60°C (-24 to 120°F). Good natural ventilation and protection of the sensor unit against dust, salt etc. allows long service intervals.



- **Leaf wetness sensor** – The Pessl Instruments sensor originally developed by the South African researcher, Dr. Wolf Schwabe, can be used for direct measurement of free water (leaf wetness) in the crop. The sensor consists of two stainless steel electrodes in a plexiglass holder with a fastening clamp and a sensor surface made from regular filter paper that is placed underneath the electrodes. This sensor is a major break-through in leaf wetness measurement technology and has demonstrated itself to be a practical solution that can be used on all crops. The sensor needs minimum care and service (replace filter paper every 1-3 months) and adapts better to changing canopy conditions during the growing season than the previous gold grid sensor.



- **Rainfall** – WMO type self-emptying tipping- spoon type system is exceptionally accurate with a resolution of 0.2 mm (0.01"). For cold climates and winter use, a rain collector heater can be provided.



- **Wind speed** – Rugged WMO approved sensors are sensitive to the lightest breeze and withstand high winds (up to 200 km/hour) without problems.

**Technical Feature and Models:**

µMETOS® SM Logger Power supply: 6- 1.5 Volt AA batteries  
 Dimensions: IP 65 housing – Length 270 mm (11.7 inches) – Diameter 115 mm (5 inches)  
 Working temperature of Logger: -30 to 60°C (-24 to 120°F)  
 Working temperature of Display: 0 to 60°C (30 to 140°F)  
 IR Interface: 115Kb Water-tight connectors Memory size: 512Kb Weight: 600 gr.

Model Type	Standard Sensor Configuration
MCR100	Temp./RH/daylength
MCR200	Temp./RH/daylength/leaf wetness/rainfall
MCR250	Temp./RH/daylength/leaf wetness./rainfall/global radiation
MCR300	Temp./RH/daylength/leaf wetness./rainfall/wind/global radiation

Technical data is indicative and subject to change without notice! All brand names recognised.

Turning Information into Profits

Distributor:



Werksweg 107 • 8260 Weiz • Austria  
 Tel.: ++43(0)3172-5521  
 Fax: ++43(0)3172-552123  
 e-mail: sales@metos.at